

Zeneo

Wide selection of highly efficient water heaters, equipped with ACI hybrid dynamic anti-corrosive protection



ELECTRIC WATER HEATER

STANDARD MODELS: 50 TO 200
(Vertical wall-mounted)

COMPACT MODELS: 100 TO 200
(Vertical wall-mounted)

MODELS: 150 TO 300 (Floor-standing)

MODELS: 100 TO 200 (Horizontal wall-mounted)



+ COMFORT

- Precise, constant and reliable heating temperature using electronic regulation

+ DURABILITY

- ACI hybrid technology: dynamic anti-corrosive protection
- Steatite technology: ceramic dry heating element protected by a sleeve for limited scaling and easy maintenance
- New electronic card: continuous protection of the 10mA tank
- Diamond-quality glass lining
- Pressure relief valve
- Dielectric union
- Specific lip gasket to avoid corrosion around the flange

+ INSTALLATION

- Vertical wall-mounted, horizontal wall-mounted & floor-standing versions to match all interior installation requirements
- Fully detachable next-generation screw-fixed hood
- Top and bottom handles for better grip

Safe operation:

- IP 25 - full compliance with European standards for electrical safety and user protection

+ ENERGY SAVINGS

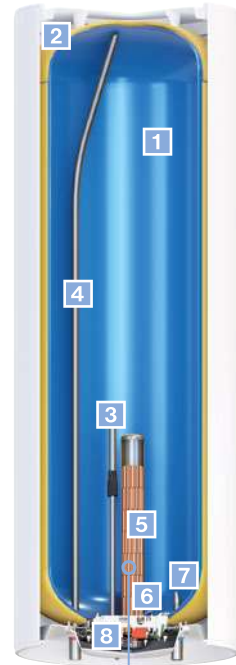
- Accurate temperature control via electronic thermostat
- High-efficiency water inlet
- CFC-free high-density insulation for greater energy savings

+ USER-FRIENDLY

- Heating light indicator
- Light-up display on the hood for easy reading



- 1 High-density, 0% CFC polyurethane
- 2 **DIAMOND-QUALITY GLASS LINING** for long life and reliability
- 3 **ACI HYBRID ANTI-CORROSIVE SYSTEM**
- 4 Optimised stainless steel
- 5 Enamel-coated sleeve
- 6 **STEATITE DRY HEATING ELEMENT**
- 7 Stainless steel water inlet
- 8 Electronic thermostat



Patented ACI hybrid technology guarantees you:

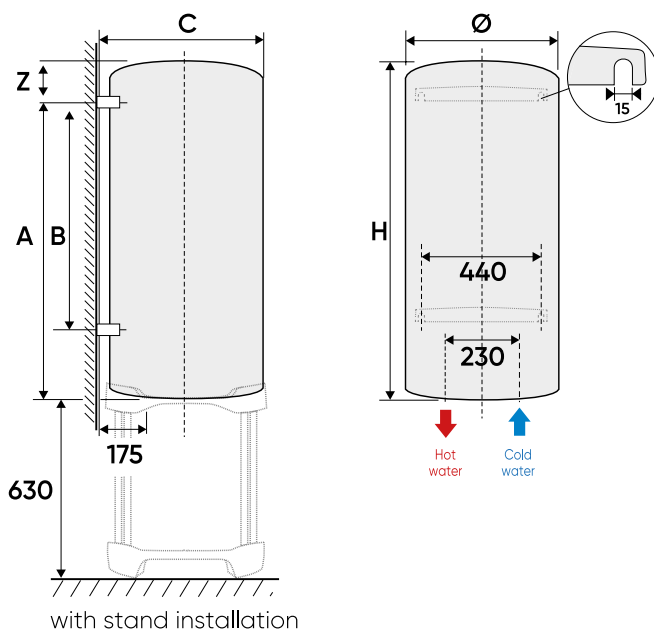
- + Permanent tank protection for all water types
- + Limited scaling and easy maintenance
- + Immediate, permanent protection thanks to the combined continuous current generated by the titanium anode and the magnesium

Zeneo

Wide selection of highly efficient water heaters, equipped with ACI hybrid dynamic anti-corrosive protection



Rotating dielectric union included



Technical specifications and installation dimensions

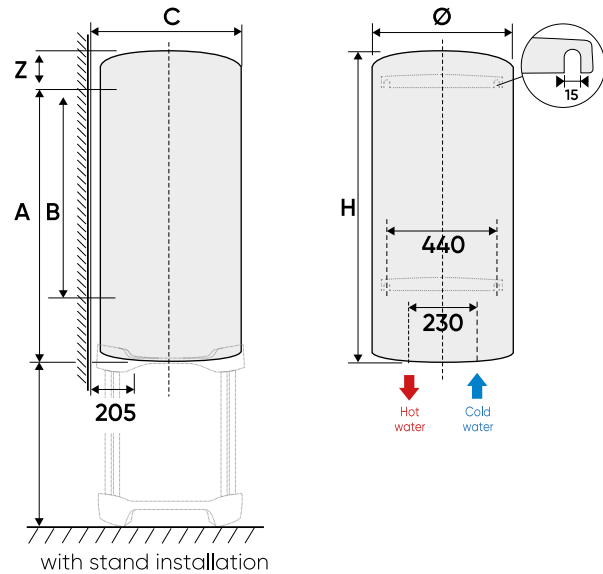
Model	Output (W)	Voltage (V)	Heating time	Hot water capacity at 40°C	Cooling constant	Energy consumption kWh/24 h	Dimensions (mm)						Net weight (kg)	ErP energy class	Profile	
							Ø	H	A	B	Z	C				
Zeneo Standard Vertical wall-mounted																
50	1200	230 V single phase	2h23	-	0.35	0.82	505	575	370	-	172	530	23	C	M	
75	1200	230 V single phase	4h08	142 L	0.28	1.08	513	705	570	-	135	530	23	C	M	
100	1200	230 V single phase	5h27	177 L	0.27	1.28	513	835	750	-	85	530	27	C	L	
150	1800	230 V single phase kit for 400 V 3-phase	5h14	277 L	0.23	1.65	513	1155	1050	800	105	530	35	C	M	
200	2200		5h44	374 L	0.20	1.94	513	1475	1050	800	425	530	45	C	L	
Zeneo Vertical wall-mounted turbo range																
50	1800	230 V single phase kit for 400 V 3-phase	1h27	-	0.35	0.82	505	575	370	-	172	530	23	C	M	
75	3000		1h37	132 L	0.31	1.11	510	735	575	-	135	530	27	C	M	
100	3000		2h20	184 L	0.28	1.34	510	900	750	-	85	530	30	C	L	
150	3000		3h20	269 L	0.22	1.56	530	1200	1050	800	105	550	39	C	M	
200	3000		4h46	363 L	0.20	1.87	530	1515	1050	800	425	550	49	C	L	

Technical specifications and installation dimensions

Model	Output (W)	Voltage (V)	Heating time	Hot water capacity at 40°C	Cooling constant
Zeneo Compact vertical wall-mounted (Ø 570 mm)					
100	1200	230 V single phase	5h29	177 L	0.24
150	1800	230 V single phase kit for 400 V 3-phase	5h09	278 L	0.20
200	2200		5h53	369 L	0.20

Energy consumption kWh/24 h	Dimensions (mm)						Net weight (kg)	ErP energy class	Profile
	Ø	H	A	B	Z	C			
Zeneo Compact vertical wall-mounted (Ø 570 mm)									
1.15	570	740	570	-	165	585	32	C	L
1.43	570	990	750	500	235	585	41	C	M
1.88	570	1245	1050	800	190	585	51	C	L

IP 25 CE

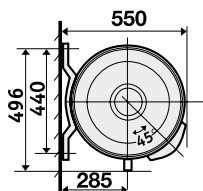
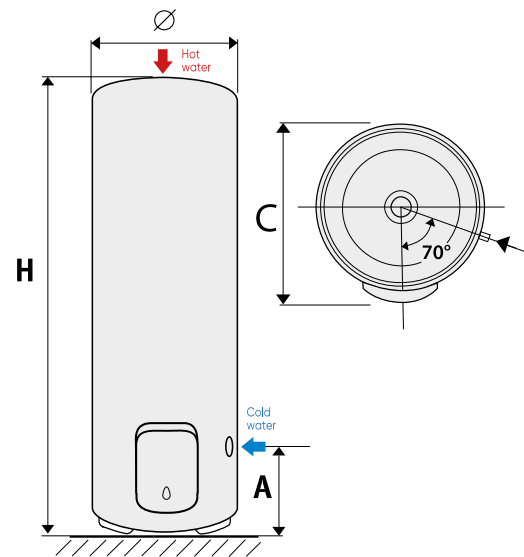


Technical specifications and installation dimensions

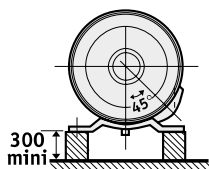
Model	Output (W)	Voltage (V)	Heating time	Hot water capacity at 40°C	Cooling constant
Zeneo Floor-standing					
150	1800	230 V single phase kit for 400 V 3-phase	4h19	276 L	0.23
200	2200		5h14	376 L	0.20
250	3000		4h58	435 L	0.19
300	3000		6h18	537 L	0.18

Energy consumption kWh/24 h	Dimensions (mm)				Net weight (kg)	ErP energy class	Profile
	Ø	H	A	C			
Zeneo Floor-standing							
1.65	575	1015	280	645	42	C	M
1.88	575	1270	280	645	47	C	M
2.22	575	1510	280	645	53	C	L
2.49	575	1765	280	645	60	C	L

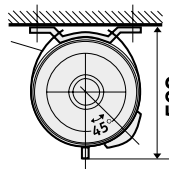
IP 25 CE



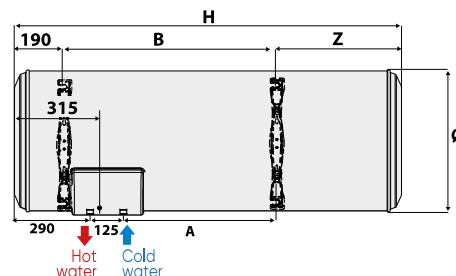
Wall mount



Floor mount



Ceiling mount



Technical specifications and installation dimensions

Model	Output (W)	Voltage (V)	Heating time	Hot water capacity at 40°C	Cooling constant	Energy consumption kWh/24 h	Dimensions (mm)						Net weight (kg)	ErP energy class	Profile
							Ø	H	A	B	Z	C			
Zeneo Horizontal wall-mounted															
100	1800	230 V single phase kit	2h59	171 L	0.32	1.16	520	830	275	500	150	-	32	C	L
150	1800	230 V single phase kit for 400 V 3-phase	4h20	251 L	0.25	1.56	520	1140	575	800	150	-	39	C	L
200	2200		5h08	332 L	0.22	1.87	520	1460	575	800	470	-	49	C	L

IP 25 CE